

21 April, 2006

Page 1 of 3

### SADER IC VE DIS TIC.LTD. STI.

PERPA Tic. Mrk. B Blok

K. 8 No. 841 Okmeydanı - İstanbul

FAX NO:0212 320 09 51

For the attention of **Güray Aloglu (gurayaloglu@saderenergy.com)**

**REPORT NUMBER:** 440648

**DESCRIPTION:** One sample of Topin Battery.

**DATE IN:** 9 March, 2006

**DATE OUT:** 21 April, 2006

**STOCK NO:** NOT GIVEN

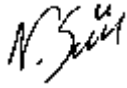
**REQUEST:** RoHS test was performed on the item

**RESULTS:** See attachment

**CONCLUSION :**

Testing Item	Conclusion
Sample	PASS

The test results relate only to the items tested. The report shall not be reproduced except in full, without the written approval of the laboratory. The reported uncertainty is based on a standard uncertainty multiplied by a coverage factor k=2, providing a level of confidence of approximately 95% the uncertainty evaluation has been carried out in accordance with ukas/iso17025 requirements.



Neslihan Sozer  
Assistant Lab. Manager  
Analytical Laboratory



Mr. S. Ozan Boz  
Assistant Lab. Manager  
Customer Relations



2111

**Test Method summary :**

Testing Item	Results (ppm)			RoHS Limit (ppm)
	1	2	3	
<b>Part No:</b>	<b>1</b>	<b>2</b>	<b>3</b>	
	<b>Accumulator top cover</b>	<b>Socket bottom red plastic</b>	<b>Socket bottom black plastic</b>	
Cadmium (Cd) Content	<b>ND</b>	<b>ND</b>	<b>ND</b>	100
Chromium VI (Cr <sup>6+</sup> ) Content	<b>ND</b>	<b>ND</b>	<b>ND</b>	1000
Lead (Pb) Content	<b>349 ppm</b>	<b>369 ppm</b>	<b>679 ppm</b>	1000
Mercury (Hg) Content	<b>ND</b>	<b>ND</b>	<b>ND</b>	1000
PBBs/PBDEs	<b>ND</b>	<b>ND</b>	<b>ND</b>	1000

Remarks : ppm = Parts per million  
 ND = Not detected  
 NA = Not applicable

**(B) Test Method :**

Testing Item	Testing Method	Reporting Limit
Cadmium (Cd) Content	As per EN 1122 and determined by AAS	2 ppm
Lead (Pb) Content	With reference to USEPA 3050B, by acid digestion and determined by AAS	2 ppm
Mercury (Hg) Content	With reference to USEPA 3052, by acid digestion and determined by AAS	2 ppm
Chromium VI (Cr <sup>6+</sup> ) Content	With reference to USEPA 3060A&7196A, by alkaline digestion and determined by UV-Vis.	1 ppm
PBBs/PBDEs	With reference to USEPA 3540C, by solvent extraction and determined by GC-MSD.	10 ppm

Remark : Report limit = Quantitation limit of analyte in sample solution



**SAMPLE MAIN**

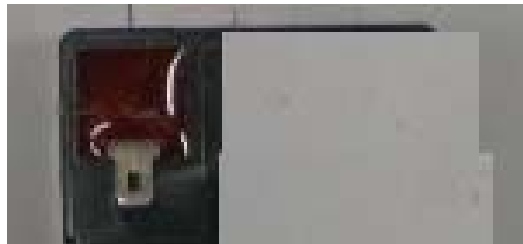


**SAMPLE'S PARTS**

**Part 1**



**Part 2**



**Part 3**

